

# PV Designer Software

With PV Designer you can compare the estimated energy production in multiple what-if design scenarios.

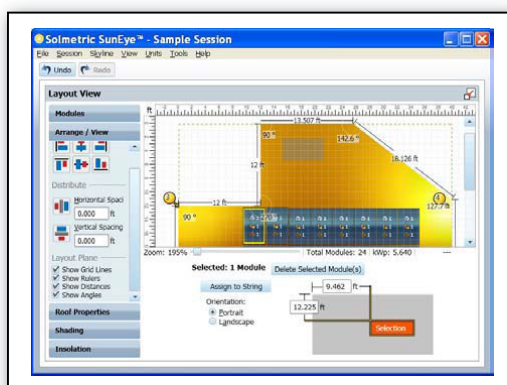


## Build winning proposals

- Create high impact visuals
- Experiment easily with alternative configurations
- Export data to your application for further analysis and proposals

## Fast, Easy, Visual PV Design

In addition to the SunEye desktop software included with the SunEye, Solmetric offers powerful software for the design of solar photovoltaic (PV) systems. PV Designer offers module layout and shade-adjusted energy production estimates in a complete integrated software tool.



## Visualize your PV designs

- Create arbitrary roof shapes and specify set-back and keep-out regions
- Drag and drop modules on roof
- Define strings and adjust module positions
- Drag and drop shade measurements from SunEye readings



See on-line tutorial at: [www.solmetric.com](http://www.solmetric.com)

## Powerful Modeling

- Includes local weather database
- Choose modules and inverters from an extensive database with key specifications
- Check string sizing vs. inverter limits
- Display monthly, daily average and annual energy output
- Visualize shade impacts over roof area
- Optimize solar access and AC kWh production



**Expert Tools.  
Better Solar.**

## Headquarters:

117 Morris Street, Suite 100  
Sebastopol, CA 95472

[www.solmetric.com](http://www.solmetric.com)  
[info@solmetric.com](mailto:info@solmetric.com)

Tel: +1-707-823-4600

Fax: +1-707-823-4620

## Also from Solmetric:

PV Analyzer IV curve tracer for quick and accurate commissioning and troubleshooting.