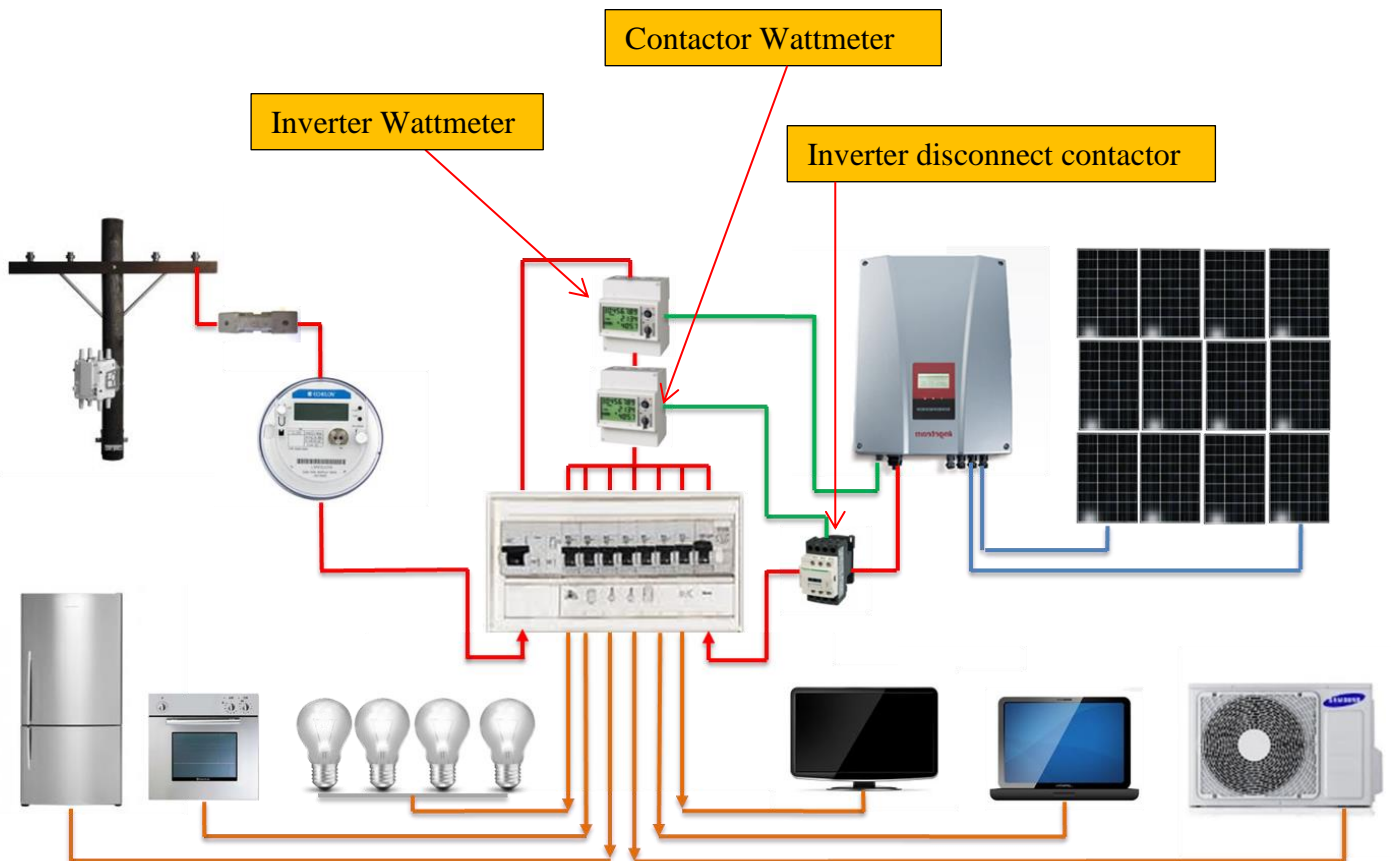


Installation of EPC-002

As per below diagram:

1. Connect wiring to the EPC-002 enclosure's bi-directional Wattmeters
2. Connect wiring to EPC-002 enclosure's inverter disconnect contactor
3. Set the export power level for disconnect into the Contactor Wattmeter and inverter "Power Balance"
4. Typical export setting is for 5% (of the inverter rated power), e.g. for a 5kW inverter the setting is 250W
5. The Contactor Wattmeter acts as a failsafe and should export power reach the threshold setting as instructed by the utility, it will then trigger the contactor to disconnect the inverter for the prescribed time. Of course, the EPC-001 system already has its own failsafe design built in however as EPC technology is very new some utilities feel that they would prefer to see a second system of export power control system installed. The EPC-002 has both the primary control of the inverter and the secondary control of a contactor as stipulated by some utilities even though in practice the contactor will never be triggered whilst the primary system is functional. For further detailed explanations refer to TN0076.



Si Clean Energy Pty Ltd
15 Isles Drive, Coffs Harbour, NSW, Australia, 2450
Ph. 02 6652 9700

www.sicleanenergy.com.au sales@sicleanenergy.com.au